

**Our daily bread**

An estimated 80% of Palestinians in Gaza are dependent on some form of food aid, and up to 60% of Gaza's children are anaemic. Oxfam GB together with local partner Ma'an Centre for Development has provided food vouchers in the Gaza Strip in a bid to help some of the most vulnerable families maintain a nutritious diet on a daily basis while at the same time supporting small shops. The programme, which is funded by the World

Food Programme (WFP), is based on monthly vouchers which can be exchanged for food from designated grocery shops. The food items people are entitled to include cheese, yoghurt, eggs, bread, flour, lentils, rice, milk and cooking oil. The food voucher programme also benefits small shops in Gaza which can stock up many more new items, increase sales dramatically and stay in business.

Photo and text: Karl Schembri/Oxfam

1. Headlines

- **Mortars/rockets/casualties/incursions:** 3 rockets and 1 mortar shell were reportedly directed by Palestinian armed groups towards Israel or Israeli forces this week. On the night of 26 September, militants fired one homemade rocket from Maqbula area, southeast of Bureij; no faction claimed responsibility. The following night, Islamic Jihad militants reportedly fired another homemade rocket from the same area. Israeli forces on the border reportedly retaliated with two tank shells, killing three militants. On 2 October, Palestinian militants reportedly fired one mortar from Al Qarara area, northeast of Khan Younis; no faction claimed responsibility. The previous week, 7 rockets and 4 mortar shells were reportedly directed by Palestinian militants towards Israel.

There were reports of one airstrike, 2 shells and 1 incursion from Israeli forces this week, as compared to 11 incursions reportedly last week.

- **Fishermen:** One incident of Israeli naval vessels firing at Palestinian fishermen was reported this week. Last week, three incidents of Israeli naval vessels firing at fishermen were reported, with one of them resulting in the death of a 20-year-old man from Beit Lahiya, who was shot in the chest. Since January 2009, Israeli naval forces have restricted the access of Palestinian fishing boats to three nautical miles from the coast; in practice, access is sometimes restricted to as little as one nautical mile.
- **Tunnel related fatalities:** There were no deaths or injuries reported in tunnels beneath the Gaza-Egypt border this week. On 1 October, Egyptian Security Forces are reported to have sealed eight tunnels which were reportedly used to import food commodities. On the following day, Egyptian forces reportedly destroyed four tunnels by detonating bombs under the border. Two of the tunnels were reportedly used to import food, one for fuel and one for cars. The previous week, no deaths or injuries were reported in the tunnels and Egyptian forces destroyed 15 tunnels.

This update is compiled by Oxfam International from the best available information drawn from reliable international sources. Some of the information is preliminary and may be updated in subsequent reports.

- **Palestinians in the “buffer zone”:** This week 7 incidents of Israeli fire in the so-called “buffer zone” along the perimeter of Gaza were reported. Two of these reportedly resulted in serious injuries, as compared with one incident and one injury reported last week. One Palestinian civilian was reported to be seriously injured when Israeli forces opened fire towards a group of about 300 persons who were participating in a demonstration some 300 metres away from the perimeter fence. Another Palestinian civilian was reported injured after Israeli soldiers reportedly targeted Palestinians collecting scrap metal near the former Erez Industrial Zone. Israeli forces restricts access to agricultural land up to 1,000-1,500 metres from the fence, making up more than 30% of Gaza’s agricultural land.
- **Rafah border crossing:** The Rafah border crossing with Egypt was officially open 7 days this week for medical cases, students and those with visas to third countries. This week, there were reports of 1,604 people entering Gaza, 2,494 people leaving, and 286 who were denied entry to Egypt through Rafah. Last week, Rafah was opened for 7 days, with 2,242 entering Gaza, 2,833 leaving and 221 denied entry to Egypt via Rafah.

In recent months, there has been a significant rise in the number of people crossing weekly through Rafah: the week before the attack on the Gaza flotilla and the opening of the Rafah border, 45 people left Gaza, 748 entered and 2 were refused entry to Egypt through Rafah.

Power plant and electricity supply: 1.2 million litres of industrial fuel were delivered this week for Gaza’s power plant, which is 34% of the 3.5 million million litres of fuel needed weekly at the current maximum capacity of 80Mw. 2 million litres of industrial fuel was transferred last week. Daily life as well as the provision of essential services, including regular water supply, sewage treatment and removal, and the functioning of health services, continue to be affected by the chronic lack of electricity. The current daily supply of electricity stands at about 30% below the estimated demand (OCHA, 14 September 2010).

- **Cooking gas:** 584 tons of cooking gas reportedly entered Gaza this week, 33% of the normal weekly level of need of 1,750 ton. 530 tons of cooking gas were reported to have entered Gaza last week. The overall cooking gas shortage has been a main concern for humanitarian agencies since November 2009.
- **Diesel/petrol:** 31,000 litres of benzine were delivered to Gaza for UNRWA this week in a one-off transfer. No diesel or petrol was delivered to the private sector. A near total ban on fuel imports for public sale was put in place by the Government of Israel in October 2008. Around 100,000 litres of diesel and 100,000 litres of petrol are reported to enter Gaza every day through tunnels under the Gaza-Egypt border (OCHA, 4 May 2010).
- **Truckloads of supplies:** Only 634 truckloads of supplies were permitted entry into Gaza this week, all of them through Kerem Shalom – the equivalent of 22% of the pre-blockade weekly average of all truckloads entering Gaza*. Karni conveyor was closed all week.

While imports remain limited, and raw materials severely restricted, exports remain banned entirely. As a result, the scale of economic activity remains heavily dependent on local demand in Gaza, which in turn is constrained by the low purchasing power of the population and the relatively small size of the local market. Until crossings are opened for export, the impact of the easing of the blockade on unemployment, poverty and food insecurity rates remains limited.

**Pre-blockade weekly average (2,807 truckloads) is calculated based on the monthly average of all truckloads that entered during the first five months of 2007, before Israel’s imposition of the blockade.*

This update is compiled by **Oxfam International** from the best available information drawn from reliable international sources. Some of the information is preliminary and may be updated in subsequent reports.

- **Exports:** No exports have left Gaza since 18 April 2010. No change in the policy prohibiting exports implemented since June 2007 has been announced by the Israeli authorities so far.
- **Internal violence:** Police and Internal Security Forces reportedly conducted an arrest campaign against an armed Salafi-Jihadist group in central Gaza, arresting eight of its members one day after an explosion followed by shooting was reported in a Hamas National Security Base. No incidents of internal violence were reported last week.

2. Humanitarian trucks (week):

Truck originator	Total for week 26 Sept to 2 Oct
UNRWA	15
WFP	22
PA	10
Water company	21
Donations	3
Commercial	564
Karni Crossing (wheat grain, animal feed)	0
Total trucks for the week	634
Percentage of pre-blockade average first five months of 2007)	22%

3. Fuel deliveries (week)

		Diesel	Petrol	Cooking Gas
26 Sept-2 Oct		0		584 tons
	Percentage of need *	0		33%
Previous week		0		530 tons
* Fuel association 2006 estimates - ** Imports of diesel and petrol for the general public and public sector in Gaza were exceptionally authorized on 6 occasions since October 2008				

Delivery of Industrial Fuel to the Power Plant (week):

Industrial diesel	Previous week	26 September – 2 October
	2 million litres	1.2 million litres
Percentage of amount required to operate at maximum supply capacity of 80 MW		34%

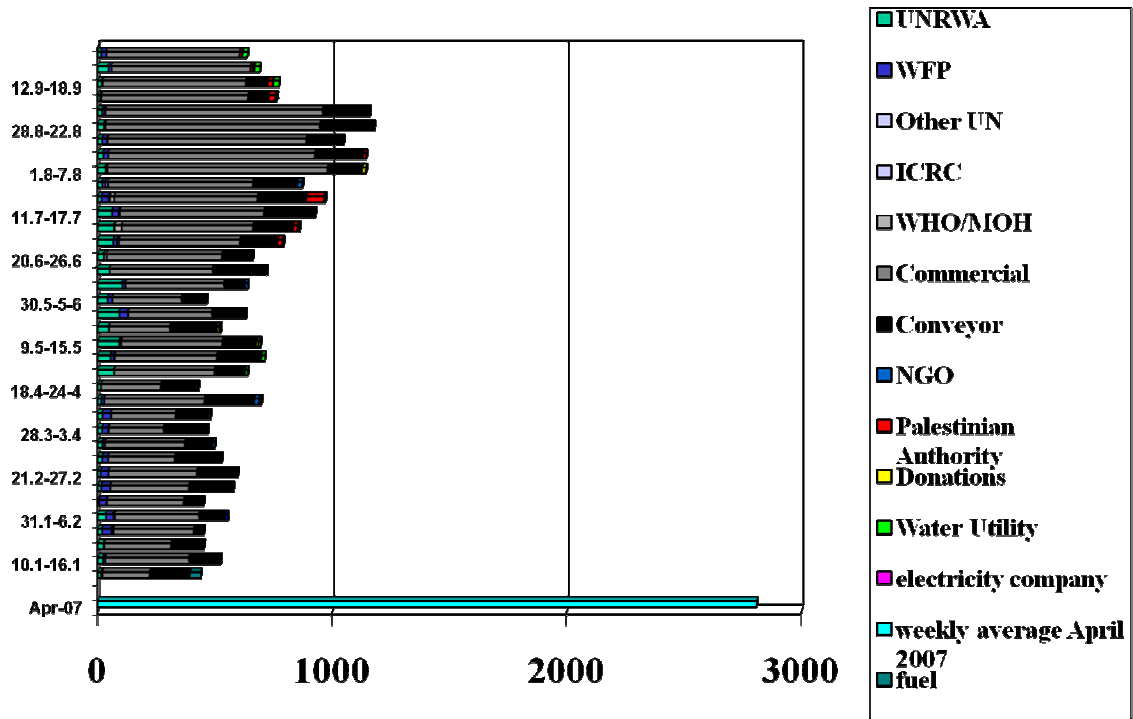
4. Contact information

Catherine Weibel, Media Lead in Jerusalem: + 972 (0) 54 639 5002 – catherine.weibel@oxfamnovib.nl
Willow Heske, Information Officer in Jerusalem: +972 (0) 57 723 4126 – wheske@oxfam.org.uk

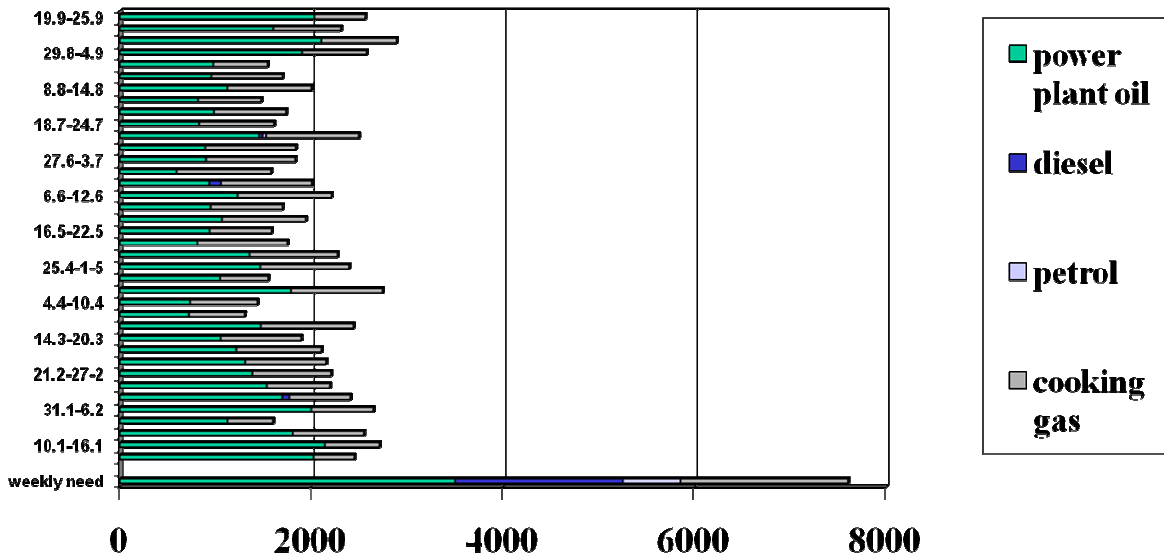
5. Trend Charts

This update is compiled by **Oxfam International** from the best available information drawn from reliable international sources. Some of the information is preliminary and may be updated in subsequent reports.

Truckloads of humanitarian goods passing weekly into Gaza in 2010 as compared to preblockade weekly average



Fuel passing weekly into Gaza in 2010 in comparison with fuel association 2006 estimates of weekly need



fuel in 1000 litres cooking gas in tons